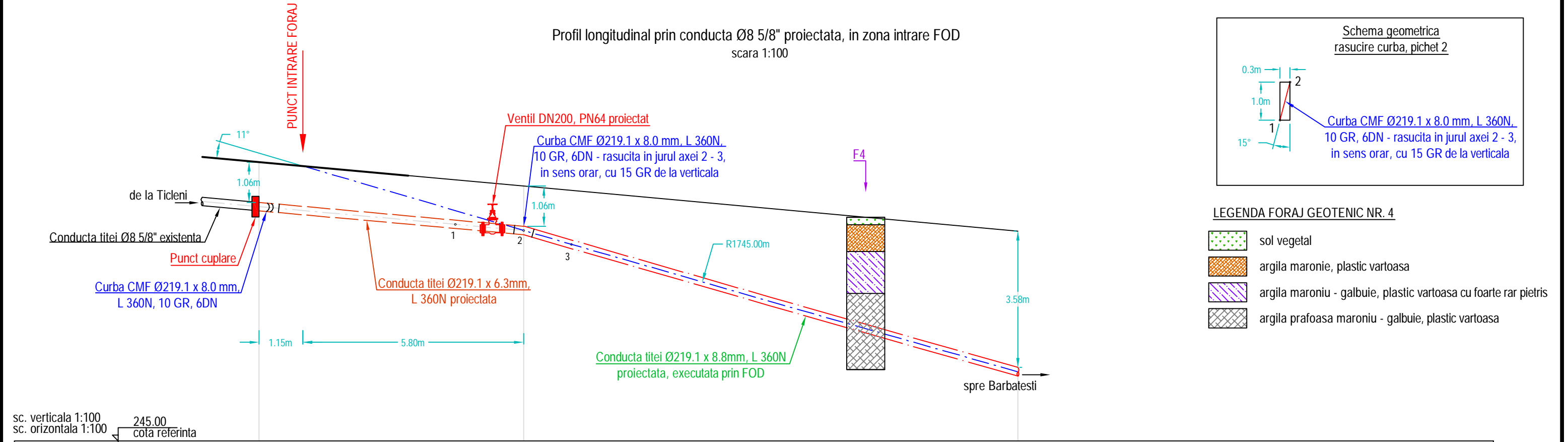


Profil longitudinal prin conducta Ø8 5/8" proiectata, in zona intrare FOD  
scara 1:100



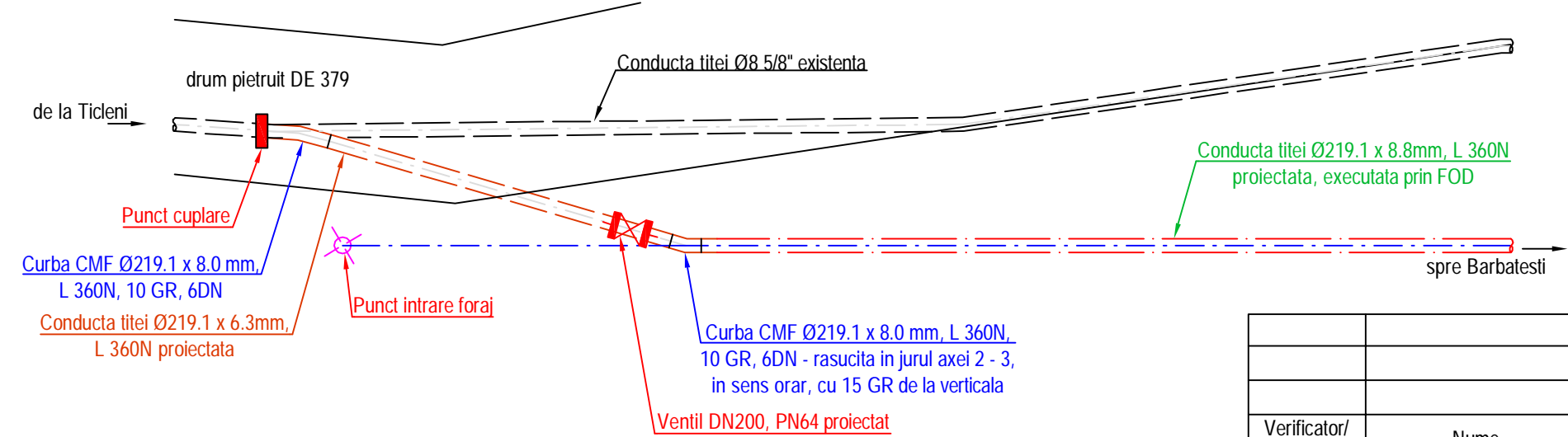
**Schema geometrica  
rasucire curba, pichet 2**

Curba CMF Ø219.1 x 8.0 mm, L 360N, 10 GR, 6DN - rasucita in jurul axei 2 - 3, in sens orar, cu 15 GR de la verticala

**LEGENDA FORAJ GEOTENIC NR. 4**

- sol vegetal
- argila maronie, plastic vartoasa
- argila maroniu - galbuie, plastic vartoasa cu foarte rar pietris
- argila prafoasa maroniu - galbuie, plastic vartoasa

Nr. pichet	1	2	3
Dist. partiala [m]		6.95	12.98
Dist. cumulata [m]	0.00	6.95	19.93
Cote [m]	252.32	251.69	250.51



Coordonate STEREO 70 pentru FOD  
Pct. topo x y  
1 - intrare foraj 376360.556 381594.657

Verificator/ Expert	Nume	Semnatura	Cerinta	Referat / Expertiza Nr. / Data
S.C. SNIF PROIECT S.A. Targoviste S.C. ATANASIU PROIECT S.R.L.				Beneficiar: CONPET S.A. PLOIESTI
Specificatie	Nume	Semnatura	Scara: 1:100	"Inlocuire conducta de titei F1 8 5/8" Ticleni - Barbatesti, in punctul drum acces rezervor apa Primaria Barbatesti, aproximativ 200 m"
Sef proiect	Ing. Costea Paul		Data: 2020	
Desenat	Ing. Radu Florin			Profil longitudinal prin conducta Ø8 5/8" proiectata, in zona intrare FOD
Proiectat	Ing. Vlasceanu Catalin			

Pr. nr.  
393/2020

Faza  
PT+CS+DE

Pl. nr.  
5